

# BAX® System Q7 Version 5.0.1.16811 Features and Instructions

BAX® System Q7 software release v 5.0 contains several user interface features, new target options, and error logging improvements.

We strongly recommend that you install the latest version as soon as possible for optimal performance.

Please read all instructions thoroughly and ensure all required prerequisites are confirmed prior to beginning the installation of the software update.

If you currently have a Windows® 7 computer system, please contact [diagnostics.support@hygiena.com](mailto:diagnostics.support@hygiena.com) or your local Hygiena® representative for Windows 10 upgrade support.

**This release is NOT applicable for Windows 7 or Windows 11 systems.**

## Software Assay Updates for Release v5.0.1.16811

- There are no changes to the analysis for BAX assays (vs. versions 4.21 and 4.22)
- Two foodproof® assays now with verified result interpretation (displayed as 'Certified' within the software):

Product Name	Product Number
foodproof® <i>Aspergillus</i> Detection LyoKit (Real-time only)	KIT230145
foodproof® <i>Salmonella</i> plus <i>Cronobacter</i> Detection LyoKit	KIT230131

foodproof assays with verified result interpretation do not require visual verification of the graphs. However, as a best practice, Hygiena recommends customers review all results.

- Seven additional foodproof assays with **experimental** analysis files for assistance with result interpretation:

Product Name	Product Number
foodproof® <i>Listeria</i> Genus Detection LyoKit	KIT230088
foodproof® <i>Listeria monocytogenes</i> Detection LyoKit	KIT230092
foodproof® <i>Listeria</i> plus <i>L. monocytogenes</i> Detection LyoKit	KIT230129
foodproof® <i>Salmonella</i> Detection LyoKit	KIT230099
foodproof® <i>Salmonella</i> Enteritidis & Typhimurium Detection LyoKit	KIT230106
foodproof® <i>Staphylococcus</i> Detection LyoKit	KIT230103
foodproof® STEC Screening LyoKit	KIT230077

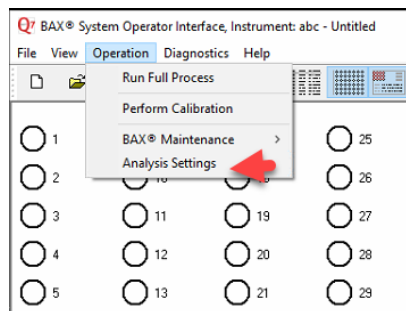
- foodproof/microproof® assays with improved **experimental** analysis files for assistance with result interpretation:

Product Name	Product Number
foodproof® <i>Enterobacteriaceae</i> plus <i>Salmonella</i> Detection LyoKit	KIT230137
microproof® <i>Legionella</i> Quantification LyoKit	KIT230119
foodproof® <i>Salmonella</i> Genus plus Enteritidis & Typhimurium Detection LyoKit	KIT230134
foodproof® <i>Vibrio</i> Detection LyoKit (Real-time only)	KIT230117
foodproof® Yeast and Mold Quantification LyoKit	KIT230112

**Important Note:** All foodproof and microproof assays with **experimental** kit analysis files are designed to assist in result interpretation but require visual verification of the graphs.

Additional information for viewing data from **experimental** analysis files:

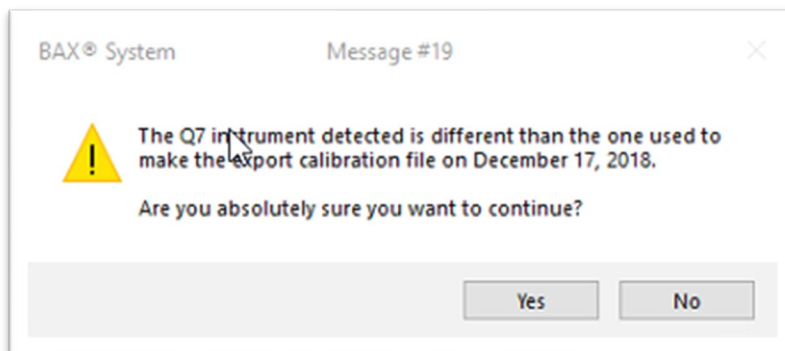
- Analysis files are now available for all assays (i.e., BAX, foodproof, microproof). By default, all assays with experimental analysis files will have analysis files set to “None”. The user can go to Operation → Analysis Settings to set the analysis file (Algorithm) to “Experimental” for targets without verified analysis files. This setting enables improved assistance with results interpretation.



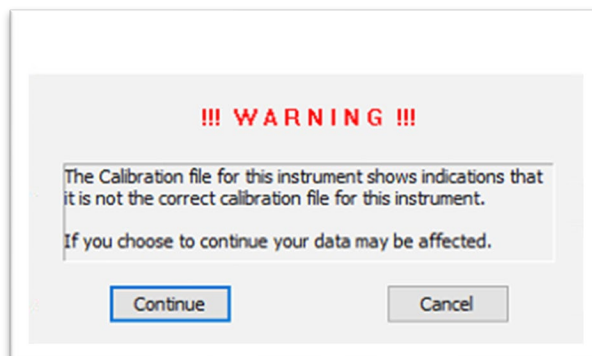
- All verified assays will have only one setting displayed as “Certified.”
- If you are using 4.22 to run foodproof assays, your selected setting will remain the same. Only the new foodproof assays in 5.0 will need to be adjusted to your preference.

## Software Feature Updates for Release v5.0.1.16811

- Users can now register the Q7 to the SureTrend® application available on the cloud.
  - Ability to review data online both graphically and by determining result status with the SureTrend software.
  - To use this feature, you must register a SureTrend account: <https://suretrend.hygiena.com/Register>
- Users can now export comma-delimited text files (.csv)
- There is a one-step compressed log file export
- Software will now check that the correct calibration file is imported for the instrument in the case of equipment replacement by loaners or service units. Each Q7 has a unique calibration file and should only be used with that specific Q7.
  - Every calibration file generated with software version 4.0 and higher collects the serial number of the Q7 camera and the serial number of the thermal block. This information is stored in the calibration file. When a calibration file is imported, the application will compare the serial numbers in the calibration file to the serial numbers of the instrument on which you are importing. If the serial numbers don't match, the following pop-up message will appear. If this message appears, locate the correct calibration file (if it's a recent replacement unit, it can be found in the sleeve on the back of the unit - or - contact Hygiena to request the correct file). If the correct file cannot be located, calibrate the instrument as instructed in the BAX Q7 User Guide.



If "Yes" is clicked in the pop-up message above, a secondary message will appear.



If 'Continue' is selected, the calibration will import, and no additional warnings or notifications will appear.

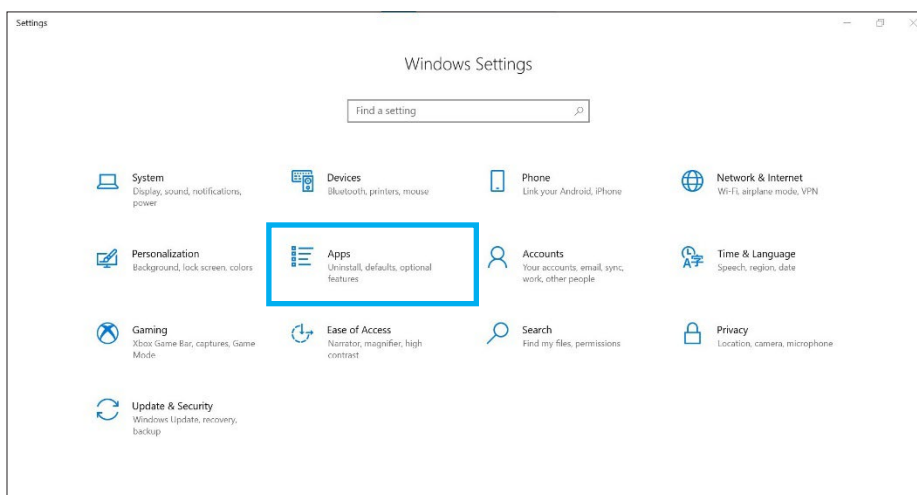
## Software Upgrade Instructions:

### 1. Required Prerequisites:

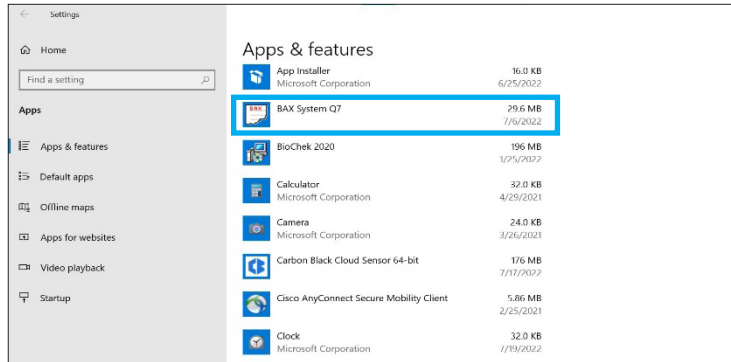
- **Regional Settings are in English**
- **Core Isolation setting should be turned off in Windows security settings**
- **Read/Write Permissions for the below file locations for all users**
  - C:\Program Files\MATLAB
  - C:\Program Files (x86)\BAX
  - C:\ProgramData\BAX Q7 System
    - All Power and Sleep Settings are set to Never.
- **Obtain the HEX Calibration Kit (Product No.: KIT230340) from Hygiena if you plan to run foodproof/microproof assays that utilize the HEX dye (see kit instructions).**
  - This additional calibration plate is a stand-alone product and is not included with other calibration kits.
  - Please visit the [Contact Us](#) page for ordering and technical support.

### 2. Calibration Storage and Removal of Current Software:

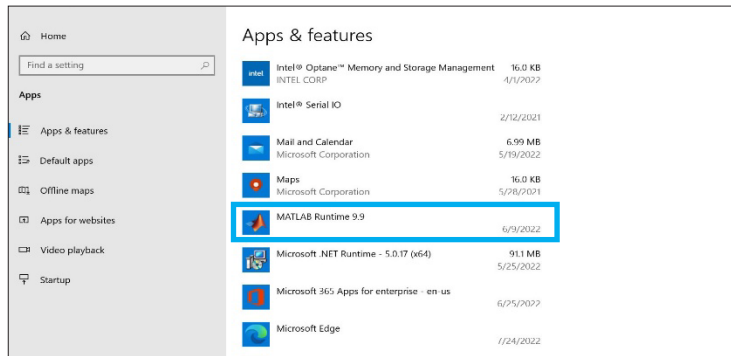
- **Back up the system's calibration file.**
  - Select Operations > BAX Maintenance > Export Calibration from the menu bar.
  - Navigate to a new folder to store the backup file and click 'Save'.
  - Name the calibration file (example: Q7Cal\_date.bqc).
- **Uninstall the previous version of the BAX Q7 application.**
  - Navigate to Windows Settings and select Apps.



- Click on BAX System Q7, select Uninstall, and agree (click Yes) on the next window to initiate removal.



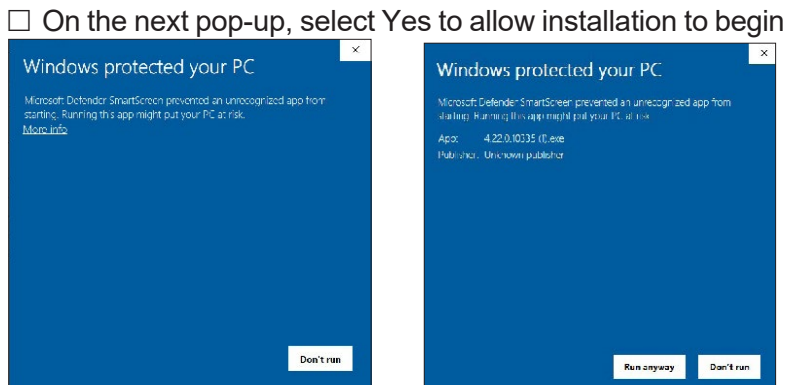
- If updating from 4.21 or 4.22, removal of MATLAB is not required. If updating from any previous versions, click on the MATLAB application, select Uninstall, and click Agree on the next window (this may take several minutes).



Restart the computer BEFORE continuing to step 3.

### 3. Download 5.0.1.16811 Software by Clicking This [Link](#) or See the Product Instructions for the BAX Q7 Software Installation.

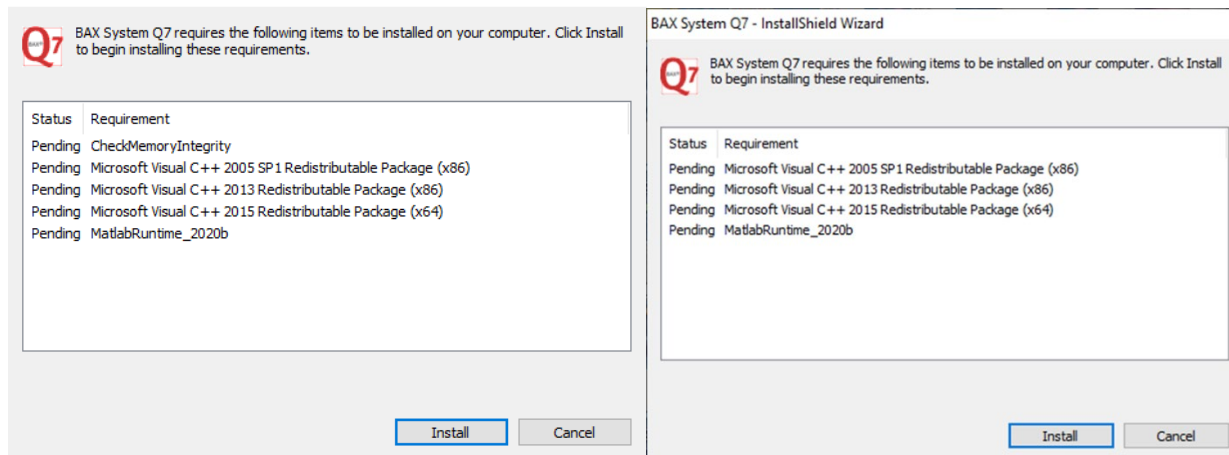
- Transfer the download to a memory/USB stick if the computer doesn't have internet access.
  - Click on the Q7 5.0.1.16811 icon and the program will automatically start executing the installation.
- A Windows protection screen may pop up. Select 'More Info', then select 'Run anyway'.



#### 4. Some Prerequisites May Need to be Installed to Prepare Your Computer for the BAX Application Installation.

If you see these, you may have to restart multiple times to get the prerequisites installed before MATLAB Runtime can install

BAX System Q7 - InstallShield Wizard



Checking memory integrity and Correct regional settings (not shown) are the first two prerequisites that need to be addressed or the Application will not install successfully.

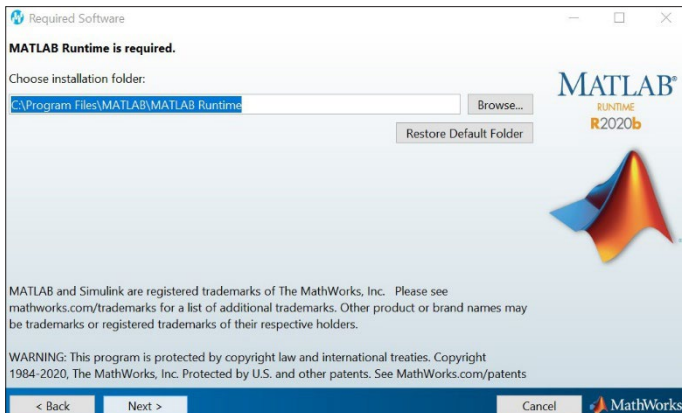
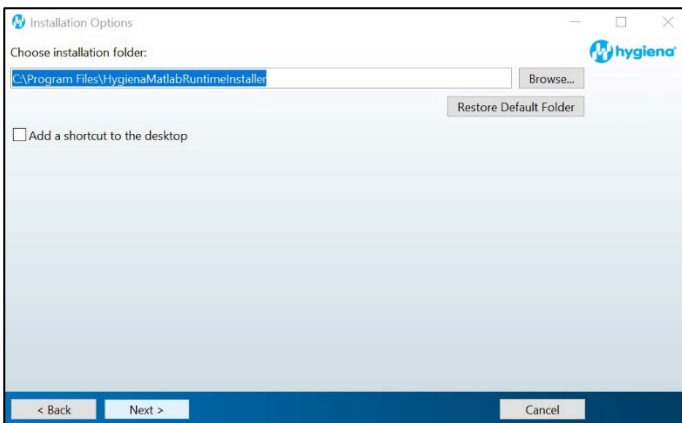
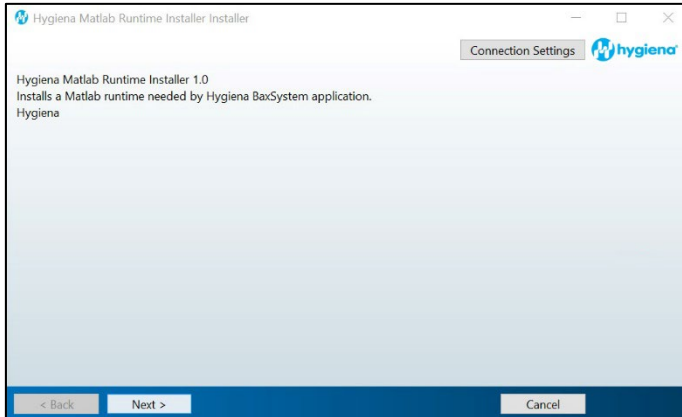
If this installation error occurs, 'VCRUNTIME140.dll was not found' (shown below), do the following:

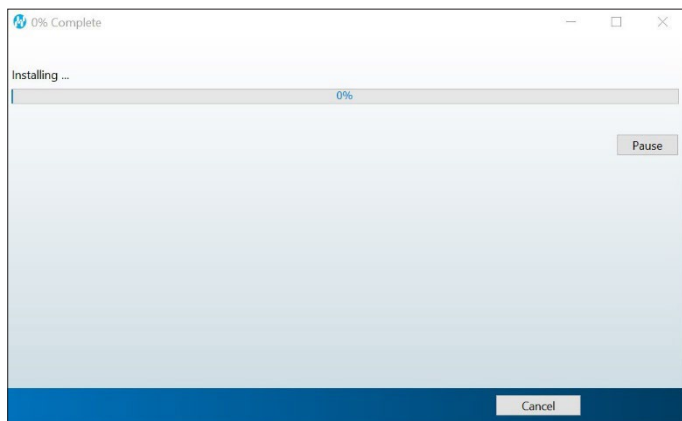
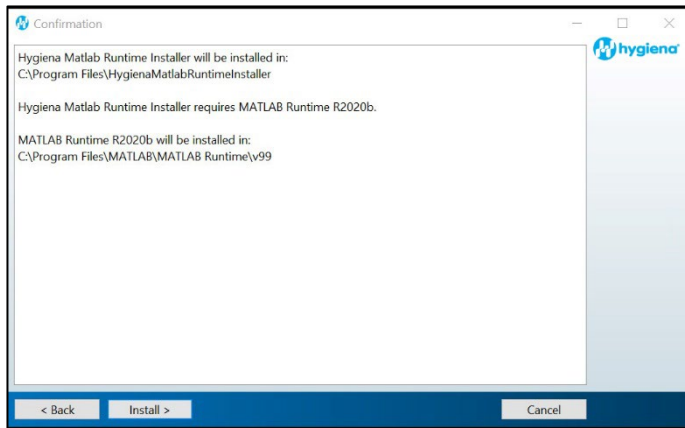
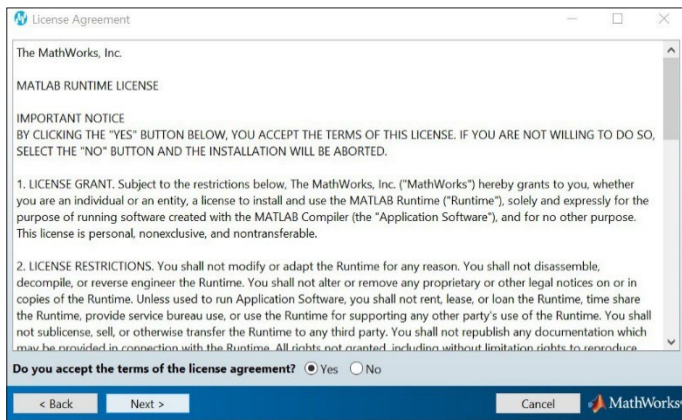
- Please download and install the patch: `vc_redist.x64.exe` from <https://www.microsoft.com/en-us/download/details.aspx?id=52685>. The installation will end when you click OK.



## 5. MATLAB Updates Will Be Installed (after prerequisites). Follow the Prompts Below and Select the Default Responses:

After Installing This Patch, the MATLAB Installation Will Continue.

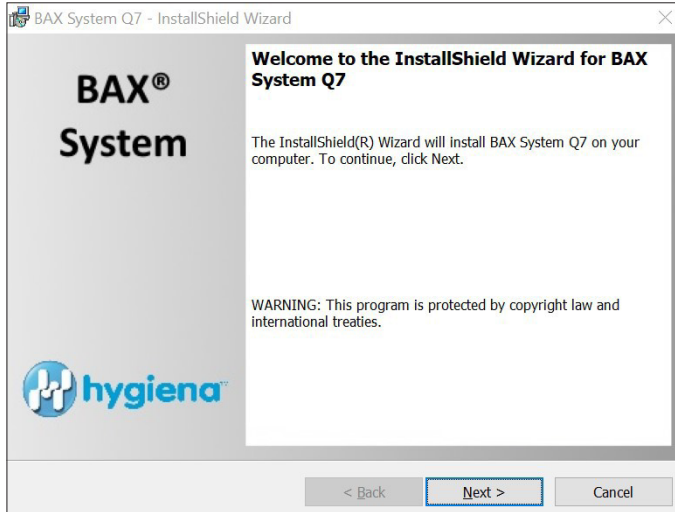






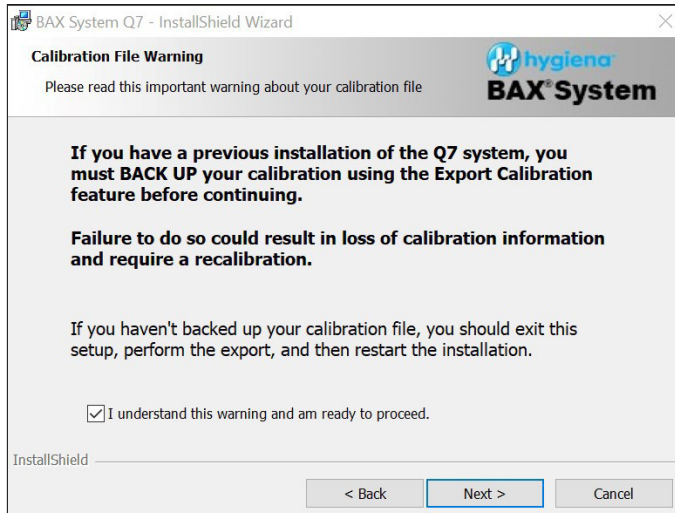
## 6. Following MATLAB Installation, the BAX Q7 Application Installation Will Be Initiated. Read the Prompts Carefully. Choose the Default Responses.

- Welcome Window – click Next.



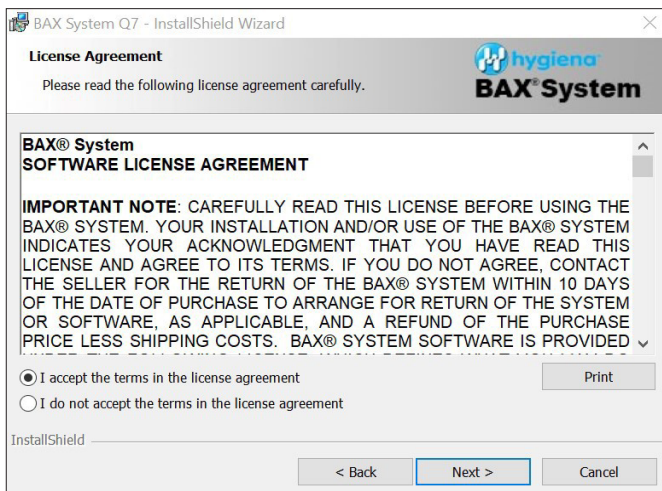
### ■ Calibration File Warning – ENSURE YOU HAVE BACKED UP THE CALIBRATION FILE.

- Check the box and click Next.



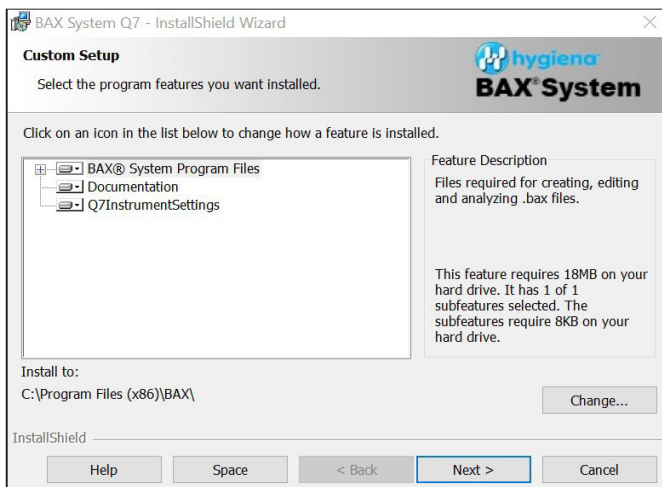
## License Agreement.

- Check the Accept Terms box and click 'Next'.



## Custom Setup.

- Click 'Next'.



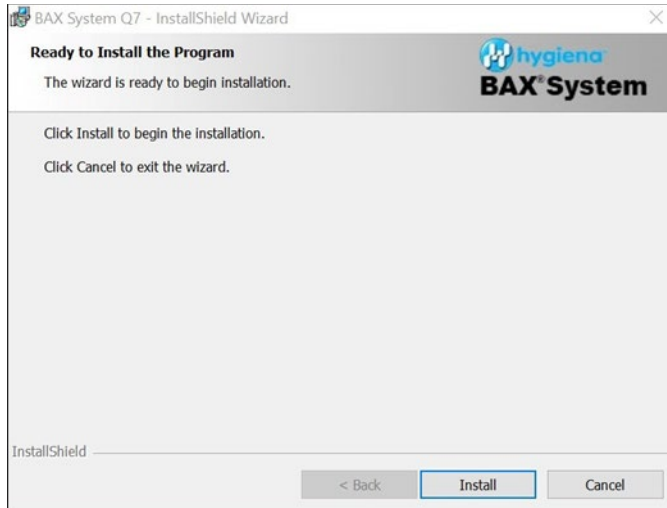
## Password Protection.

- The BAX software default is 'disabled password protection'. Choose an option for your lab, then click 'Next'.



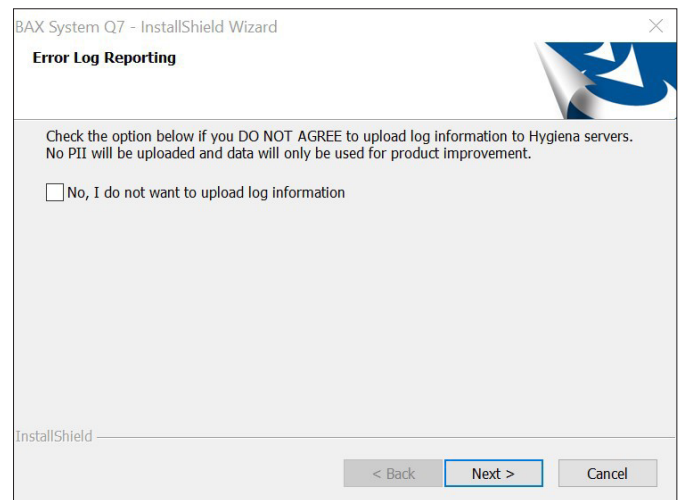
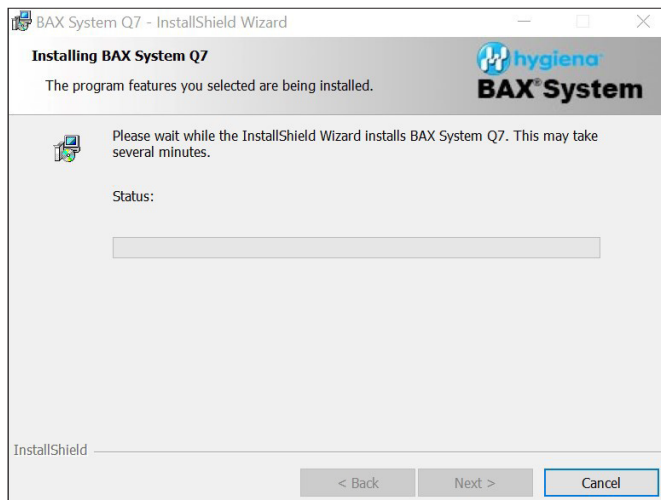
## ■ Ready to Install Program.

- Click 'Install'.



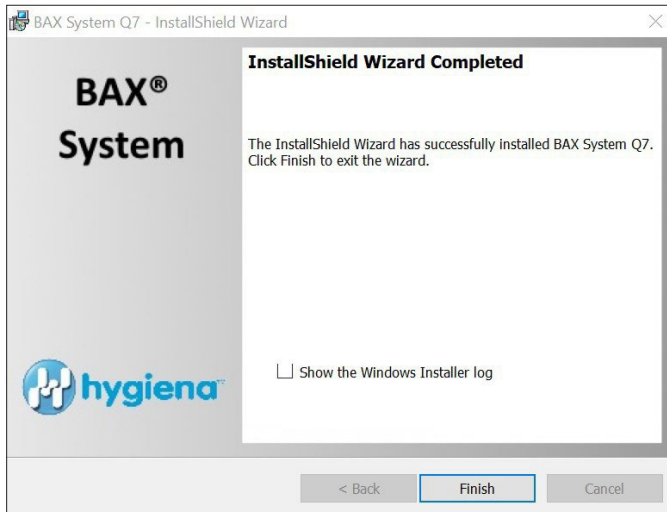
## ■ Installing BAX System Q7 Software.

- During installation, an Error Log Reporting window will pop up. We recommend NOT checking the box so the system can collect software and/or hardware errors in the Log Files to assist Diagnostics Support in troubleshooting. However, please review and decide what is appropriate for your lab.
- Select 'Next' to complete the installation.

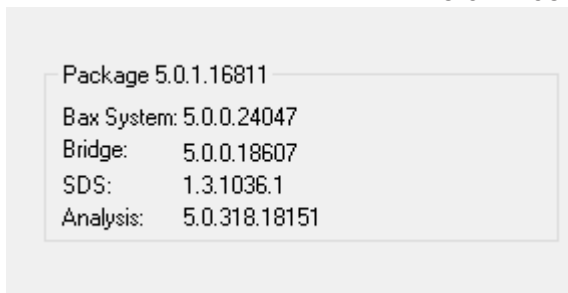


■ **InstallShield Wizard Complete.**

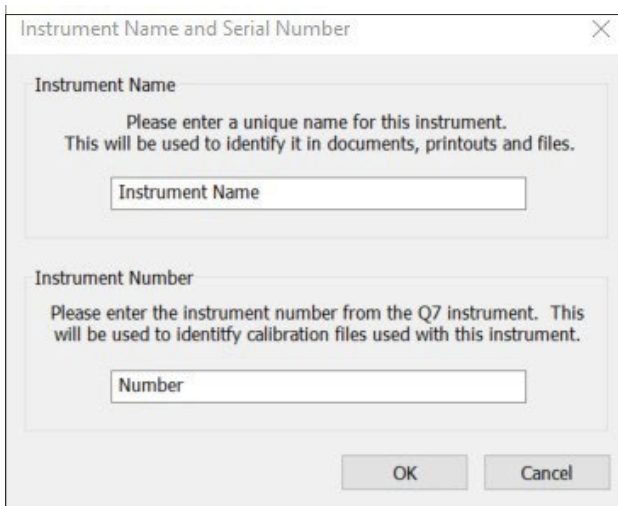
- Select 'Finish'.



- Click on the desktop icon to initiate the program. The new open screen will have software version 5.0.1.16811.



- Enter the Instrument Name and Serial Number.
  - These will appear on any reports and should be utilized.



## 7. Check the System's Calibration

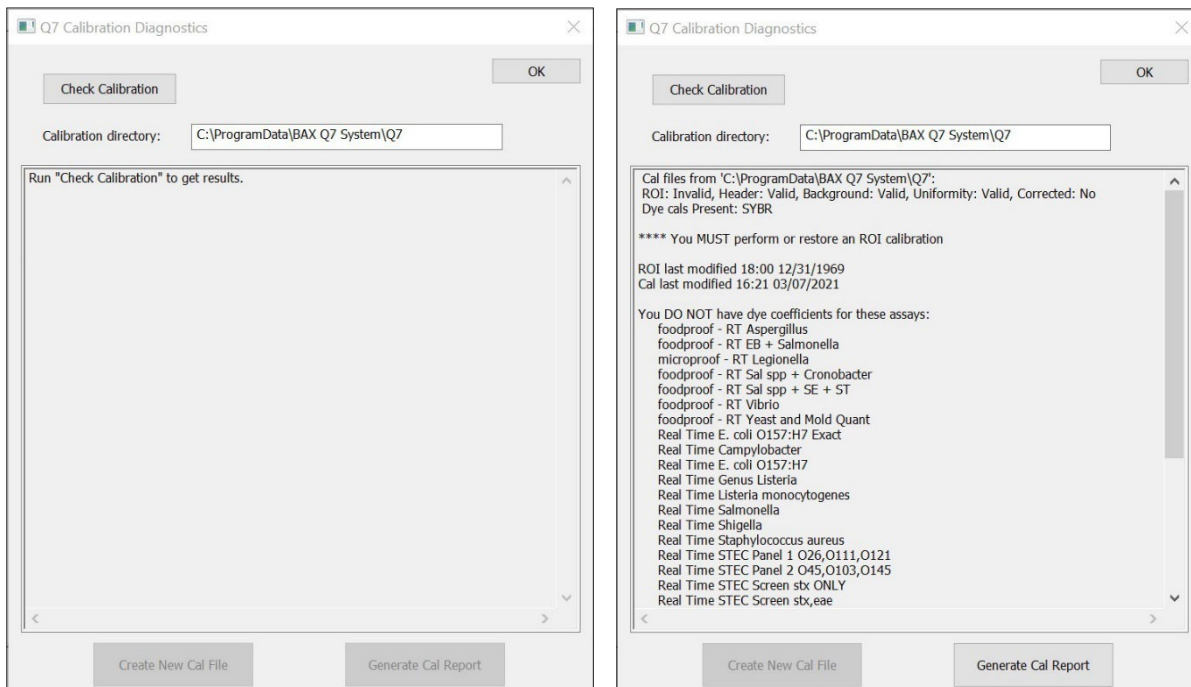
### ■ From the menu bar, select **Diagnostics > Calibration** to open the **Q7 Calibration Diagnostics** window

Click the 'Check Calibration' button to determine the status:

- If calibration is available, no further actions are needed.
- If calibration is **NOT** optimal or **NOT** found:

Import the backed-up calibration file by selecting **Operations > BAX Maintenance > Import Calibration** from the menu bar and selecting the backed-up calibration file saved from Step 2.

- To utilize many foodproof assays, additional calibration using the HEX calibration kit must be performed. Please follow the onboard instructions in the BAX Software to perform calibration.



## Appendix A: Algorithm Analysis Across Software Versions

The table below provides information to easily identify algorithm consistency across software versions and validations. There have been no changes to the assay-specific algorithms since the analysis version listed.

Product Number	Assay	BAX Q7 software version with the same algorithm as v5.0
KIT2000	BAX System Real-Time PCR Assay for <i>E. coli</i> O157:H7	4.0
KIT2001	BAX System PCR Assay for <i>Cronobacter</i> ( <i>E. sakazakii</i> )	4.0
KIT2002	BAX System PCR Assay for <i>L. monocytogenes</i> 24E	4.0
KIT2003	BAX System PCR Assay for Genus <i>Listeria</i> 24E	4.0
KIT2004	BAX System PCR Assay for <i>E. coli</i> O157:H7 MP	4.0
KIT2005	BAX System Real-Time PCR Assay for <i>L. monocytogenes</i>	4.0
KIT2006	BAX System Real-Time PCR Assay for <i>Salmonella</i>	4.0
KIT2007	BAX System Real-Time PCR Assay for <i>Shigella</i>	4.0
KIT2008	BAX System Real-Time PCR Assay for STEC Panel 1	4.0
KIT2009	BAX System Real-Time PCR Assay for STEC Panel 2	4.0
KIT2010	BAX System Real-Time PCR Assay for <i>Vibrio</i>	4.0
KIT2011	BAX System PCR Assay for <i>Salmonella</i> 2	4.0
KIT2016	BAX System PCR Assay for Genus <i>Listeria</i>	4.0
KIT2017	BAX System PCR Assay for <i>L. monocytogenes</i>	4.0
KIT2018	BAX System Real-Time PCR Assay for <i>Campylobacter</i>	4.0
KIT2019	BAX System Real-Time PCR Assay for Genus <i>Listeria</i>	4.0
KIT2020	BAX System Real-Time PCR Assay for <i>Staphylococcus aureus</i>	4.0
KIT2021	BAX System Real-Time PCR Assay for STEC Screening	4.0
KIT2039	BAX System Real-Time PCR Assay for <i>E. coli</i> O157:H7 Exact	4.0
KIT230131	foodproof <i>Salmonella</i> plus <i>Cronobacter</i> Detection LyoKit	5.0
KIT230145	foodproof <i>Aspergillus</i> Detection LyoKit (Real-time only)	5.0